

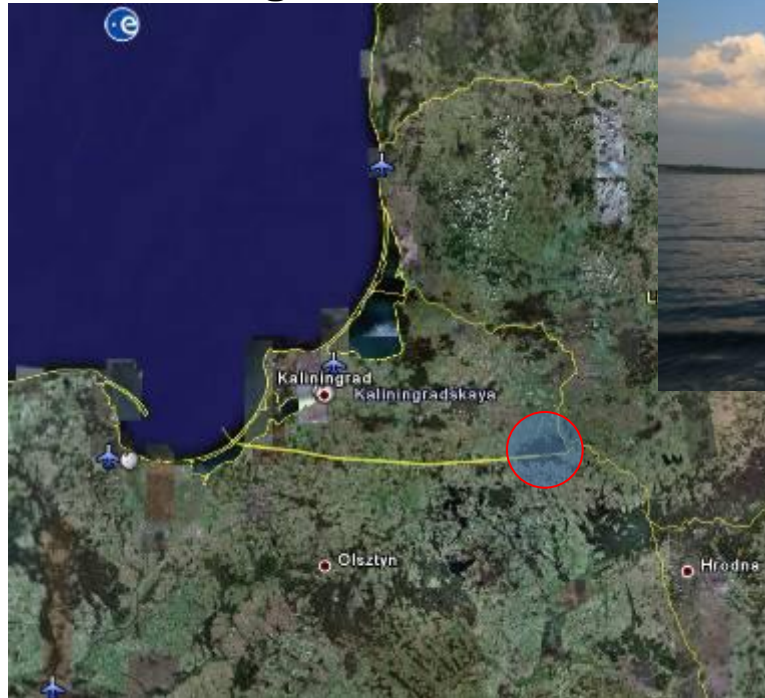


The Rominta Woodland
(Rominter Heide) as a **challenge:**
development potential and opportunities for
networking



An entire natural and historical complex

- Location: RU-LT-PL border junction
- One of the unique areas in the Baltic Region with natural, historical and cultural heritage



Vyshtynetskoje Lake

Forests of the
Rominta Woodland

An entire natural and historical complex



An entire natural and historical complex



Rominta river

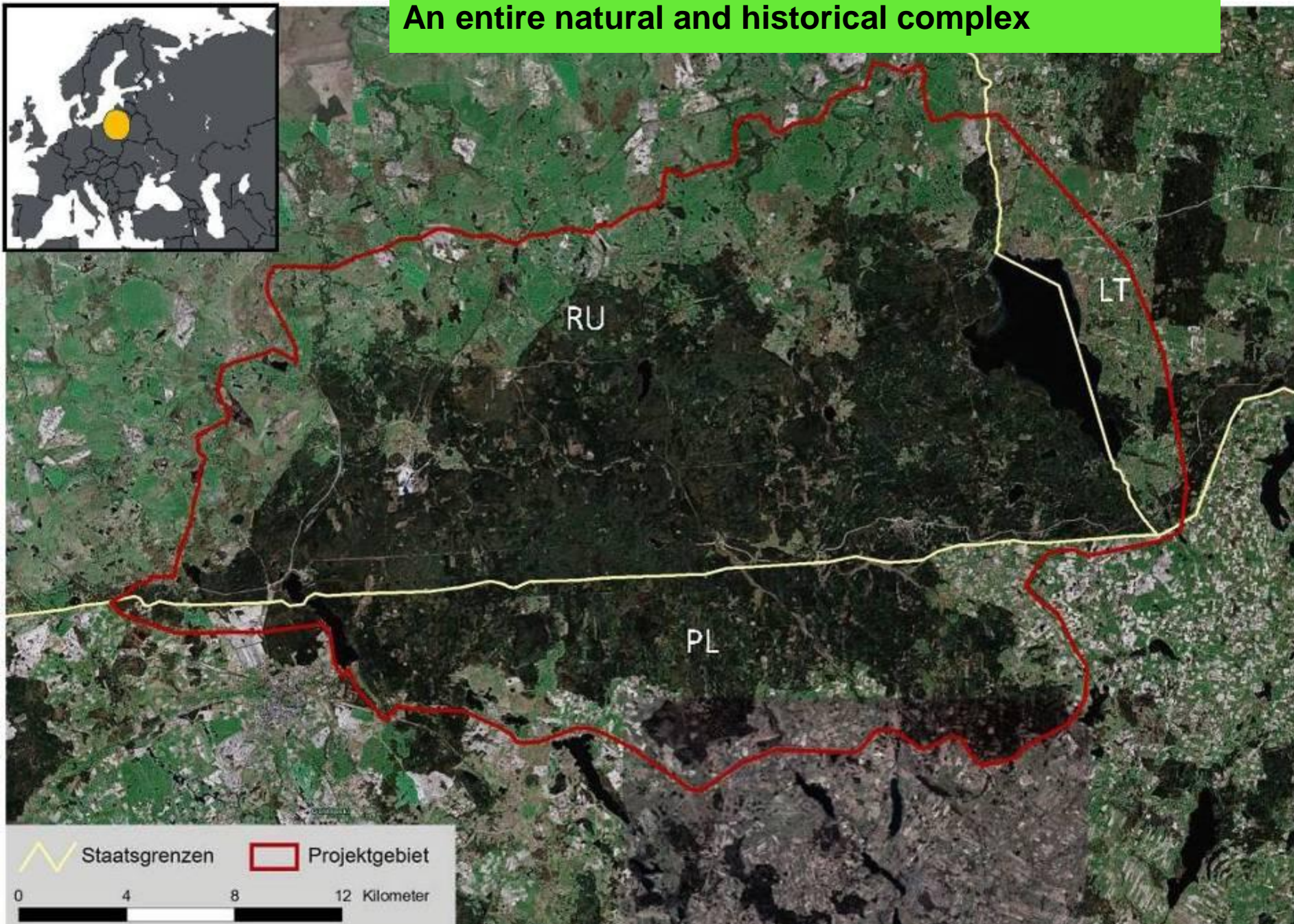
An entire natural and historical complex



An entire natural and historical complex



An entire natural and historical complex



International Project, 2007-2011

“ A concept for designating the area of special protection in Russian part of the Rominta Woodland”



Project executors



MICHAEL SUCCOW STIFTUNG
zum Schutz der Natur

**Michael Succow Foundation for the protection
of nature** (Germany, Greifswald)



**NGO "Vishtynetsky Environmental and Historical
Museum"** (Russia, Kaliningrad Region)



**Agency for Tourism Management and Regional
Development** (Germany, Berlin)

Financial support



German Federal Environmental Foundation

International Project, 2007-2011

“ A concept for designating the area of special protection in Russian part of the Rominta Woodland”

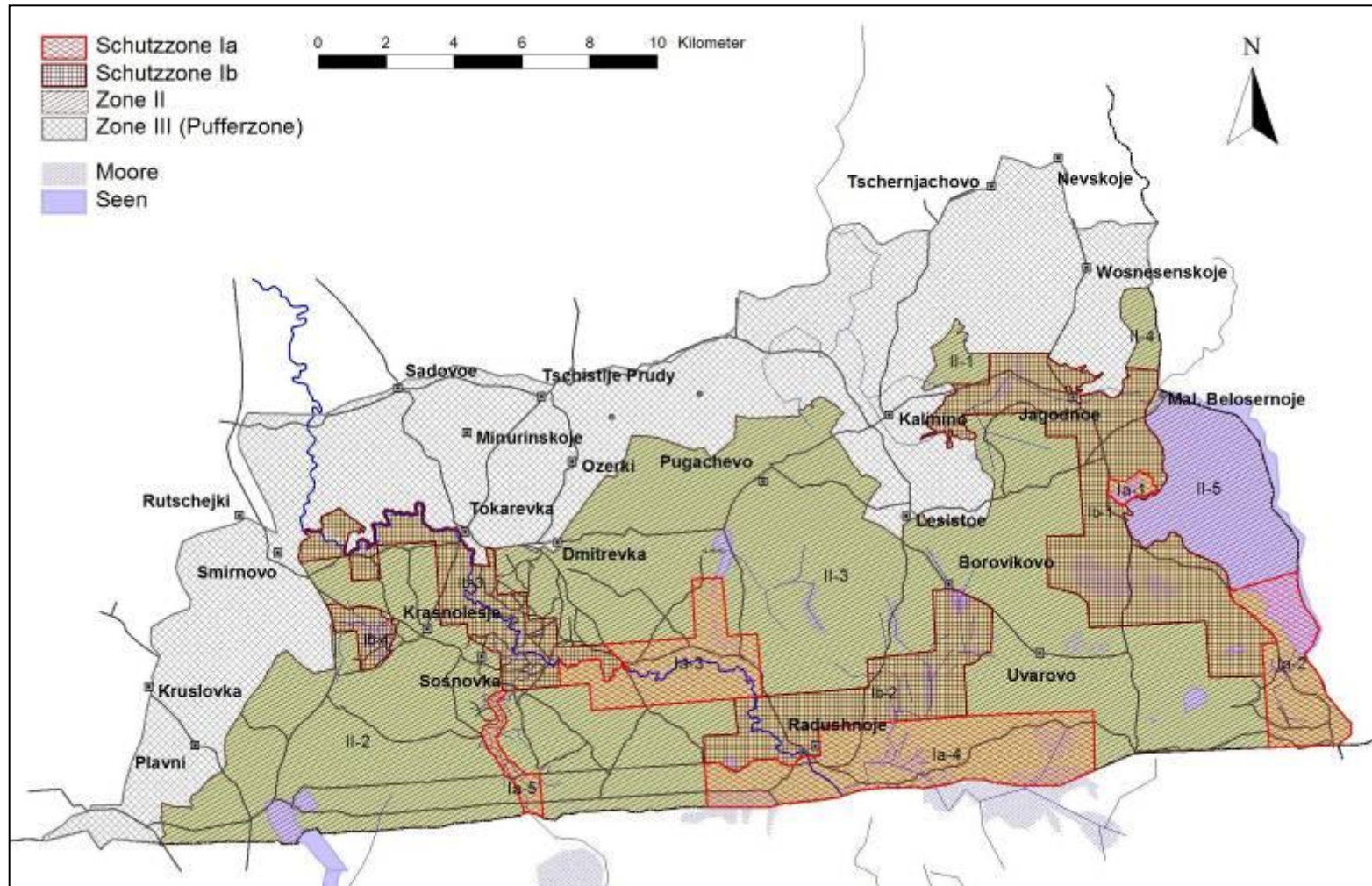


Project outcomes

1. **Comprehensive environmental revision of the area** / Umweltfachliche Gesamtrevision des Gebietes
2. **Conception of functional zonation in the Rominta Woodland** / Konzeptionierung eines Großschutzgebietes im russischen Teil der Rominter Heide
3. **Concept of environmentally friendly forestry** / Konzeption für ein ökologisches Waldmanagement
4. **Nature park management concept** / Konzeption einer Verwaltung für den Naturpark
5. **Concept of information centre for visitors** / Konzeption für ein Besucherinformationszentrum
6. **Visitors flow management and way concept** / Besucherlenkung- und Wegekonzeption
7. **Environmental education concept** / Umweltbildungskonzeption

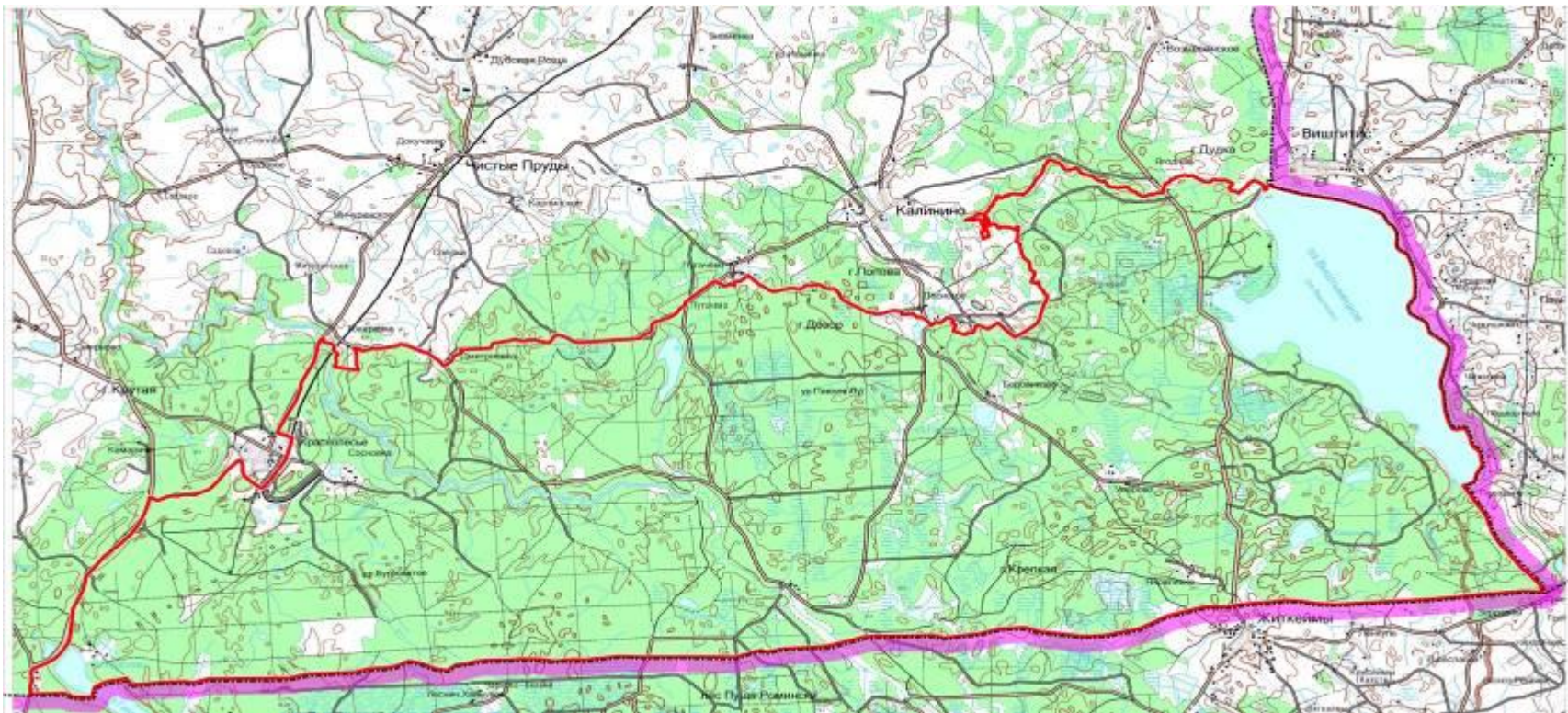
Nature park – project proposals

Conception of functional zonation in the Rominta Woodland / Konzeptionierung eines Großschutzgebietes in der Rominter Heide



Nature park – establishment

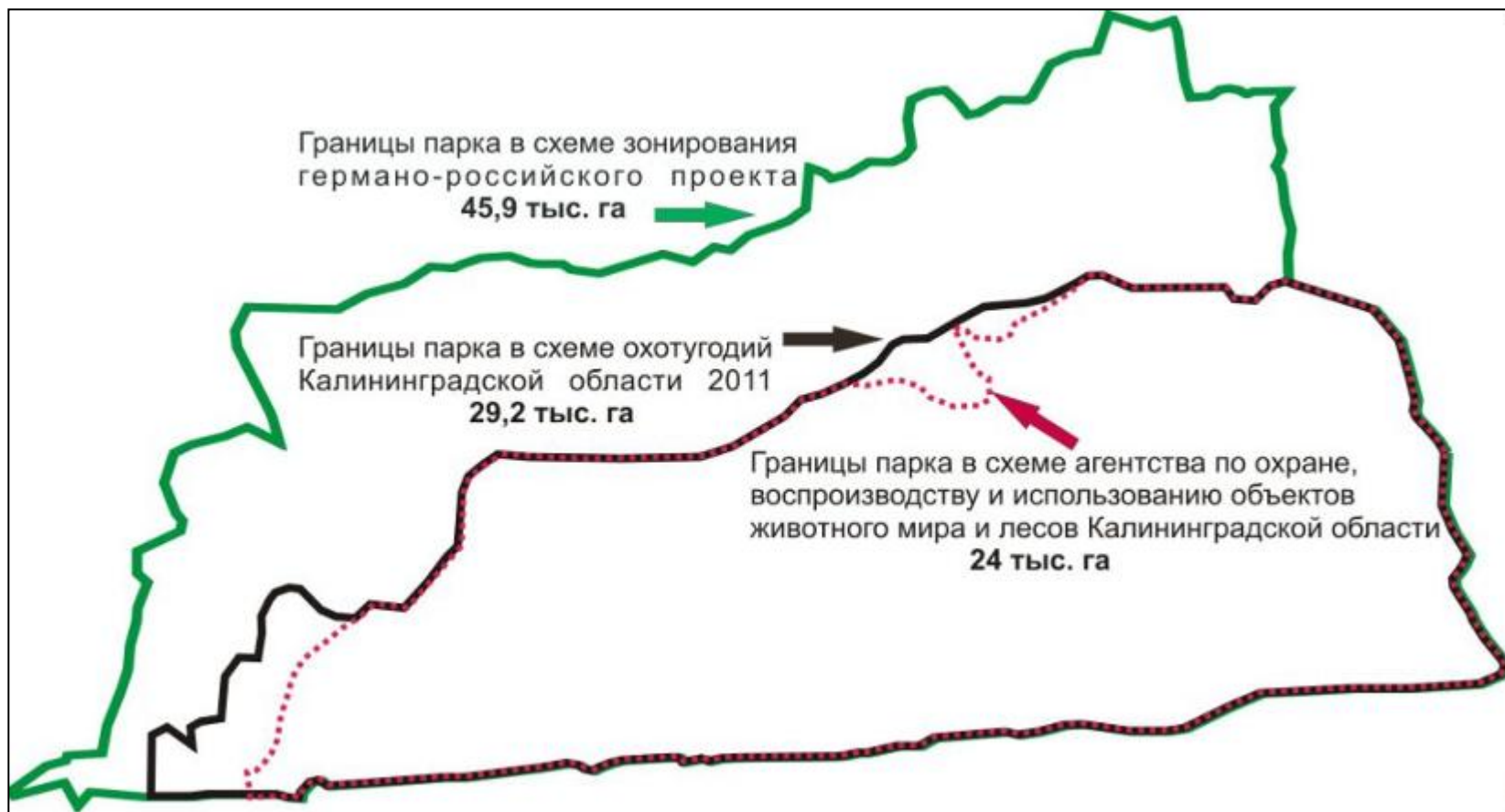
**Governor's regulation of the Januar 19, 2012
on establishing the natural park “Vishtynetsky”**



 - Nature park borders

Nature park – establishment

Governor's regulation of the January 19, 2012 on establishing the natural park “Vishtynetsky”



 - Nature park borders

Nature park – establishment



- Nature park borders



- suggested borders

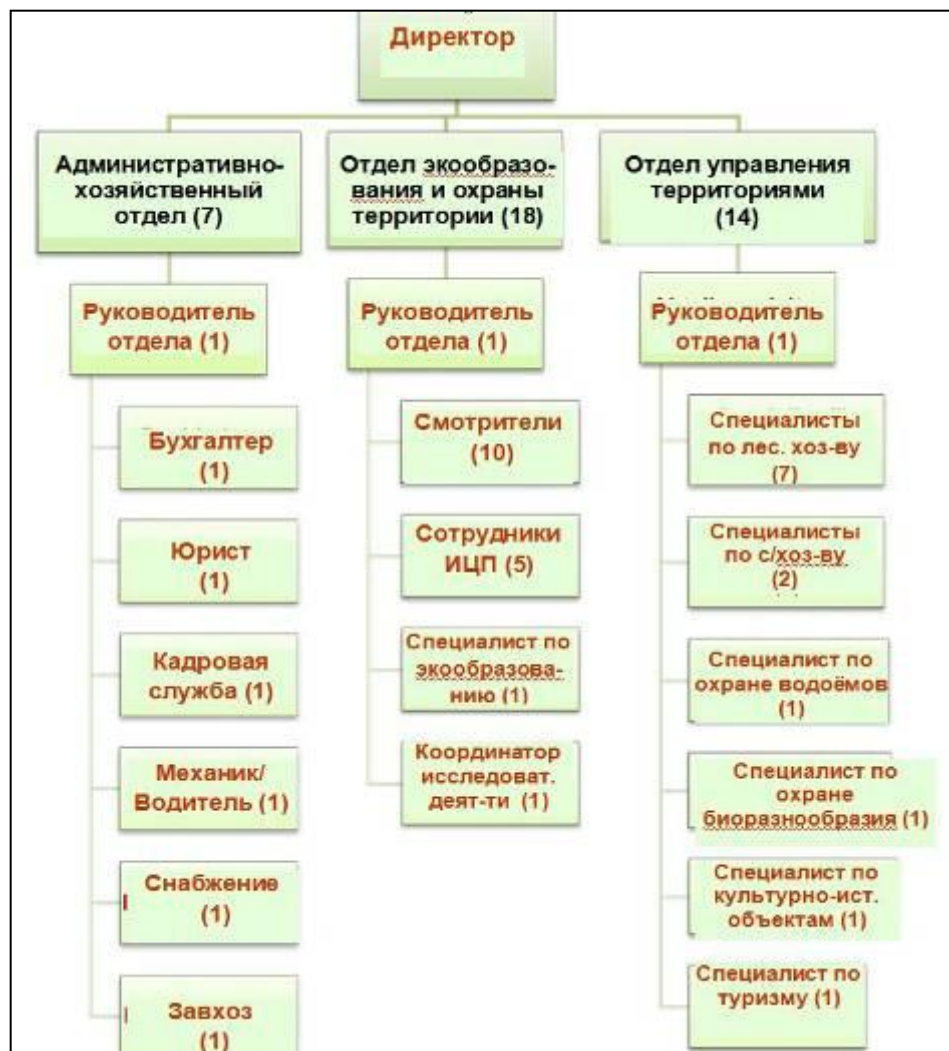
Park activities

Existing staff:
7 technical officers, 3 rangers



Photo: "Российские лесные вести"

Suggested staff: 6 technical officers, 32 expert officers



Park activities



Feeding-racks for game animals

Photo: "Российские лесные вести"



Welcome shields

Park activities



Felling on the lake banks

Challenging issues to be considered regarding the Rominta Woodland:

- ✓ Social-economic development of rural areas in the Rominta Woodland and vicinities**
- ✓ Conservation of nature and historical heritage in the Rominta Woodland (incl. Lake Vishtynetskoye)**
- ✓ Transparency and clarity of nature park activities for the community**

1. Rominta Woodland development as an important tourism area in the Baltic Sea Region

- **establishing the international coordinating committee (working group) for the Rominta Woodland**

Main tasks

= elaborating the united approaches for the Rominta Woodland development as an entire natural, historical and cultural complex

= providing an informational maintenance about Rominta Woodland on different levels

- **rural development via involving local people into sustainable tourism development process in the Rominta Woodland region**

Main task

= local initiatives support

2. Collaboration between nature parks in Lithuania, Poland and Russia concerning activity and towards designation of UNESCO Biosphere Reservation:

- issues of land management
- united approaches to the conservation of natural and cultural heritage
- designation and setting up the trans-boundary routes
- joint activities and actions
- organizing the researches of heritage in the Rominta Woodland

A photograph of a dense forest. The ground is covered in a thick layer of green moss and fallen pine needles. Several tall, slender evergreen trees stand prominently, their branches reaching upwards. The lighting is soft, suggesting a misty or overcast day. In the lower-left corner, there is a semi-transparent green rectangular box containing the text "THANKS FOR YOUR ATTENTION!".

THANKS FOR YOUR ATTENTION!