



The Reintegration Guarantee

White Paper nr. 37 On Correctional policy

Goals



The Correctional Services are

- responsible for carrying out remands in custody and penal sanctions

in a way that takes into consideration

- the security of all citizens and
- attempts to prevent recidivism
- by enabling the offenders,

through their own initiatives, to change their criminal behaviour.

SECURITY

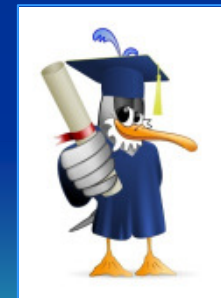
REHABILITATION

What is the Reintegration Guarantee?

Political ambition on the basis of the Soria Moria Declaration
= the political platform for the current government

Anyone who finishes a sentence should be helped to obtain:

- Housing
- Work
- School
- Income
- Debt counselling
- Necessary health care etc.



Why this guarantee?



To reduce crime

- reduce the number of victims
- reduce repeated incarceration

– give offenders a possibility for alternative behaviour

In order to
Create a safer society!



So what is new?

1851:

”....one must not leave the prisoner alone in the critical moment”

2008:

removing the “slip-up” zone

What is the difference?



Correctional development

Ideology
↓
Architecture
↓
Practice

before



now



Social development

- Social Democracy
From charity to social welfare
- Welfare State
From social welfare to rights
- Rights-based Society
End of intra-departmental
charity



Reintegration "Guarantee"

- *Political* guarantee
- No *new* legal rights
- Exercising the rights of every citizen
- It requires the co-operation of the offender



Six myths around the guarantee

Myth #1

The Ministry of Justice “owns”
the Reintegration Guarantee

No!

The Government owns it



Myth #2

The Correctional Services
“own” the prisoners

No!

*The municipalities
own the prisoners
coming from a community –
going to a community*



Myth #3

“The Others” are to blame!

No!

All you need is
Goodwill
Money



Myth #4

Now it is really becoming
worth while being a criminal!

No!

*Now the possibility to get the
necessary services is provided*



Myth #5

The Probation service has no role
in the reintegration guarantee

No!

*The guarantee applies to
all forms of sentence -
including those administered
by probation*



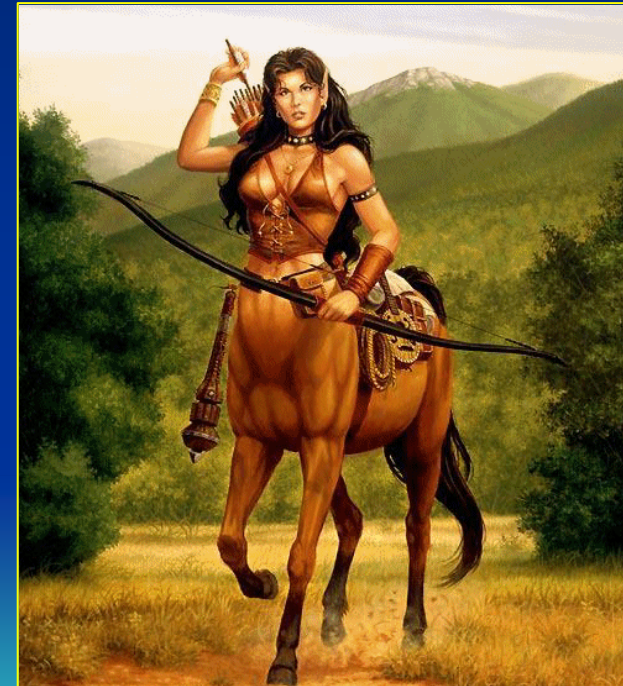
Myth #6

Women are not given any attention

OK,
perhaps not particularly

*But it applies to everyone,
so also to women*

- *Local challenge*



The Reintegration Project

From June 30, 2012

“nobody will be ignored in the critical moment”

The employment and welfare administration in Norway (NAV) will be located inside all prisons, just like the school, library system and health care



Project Philosophy

- Do enough, but as little as possible
- Use the established arenas
- Use today's knowledge
- Small workgroups
- Short meetings
- Systematize
- Inform

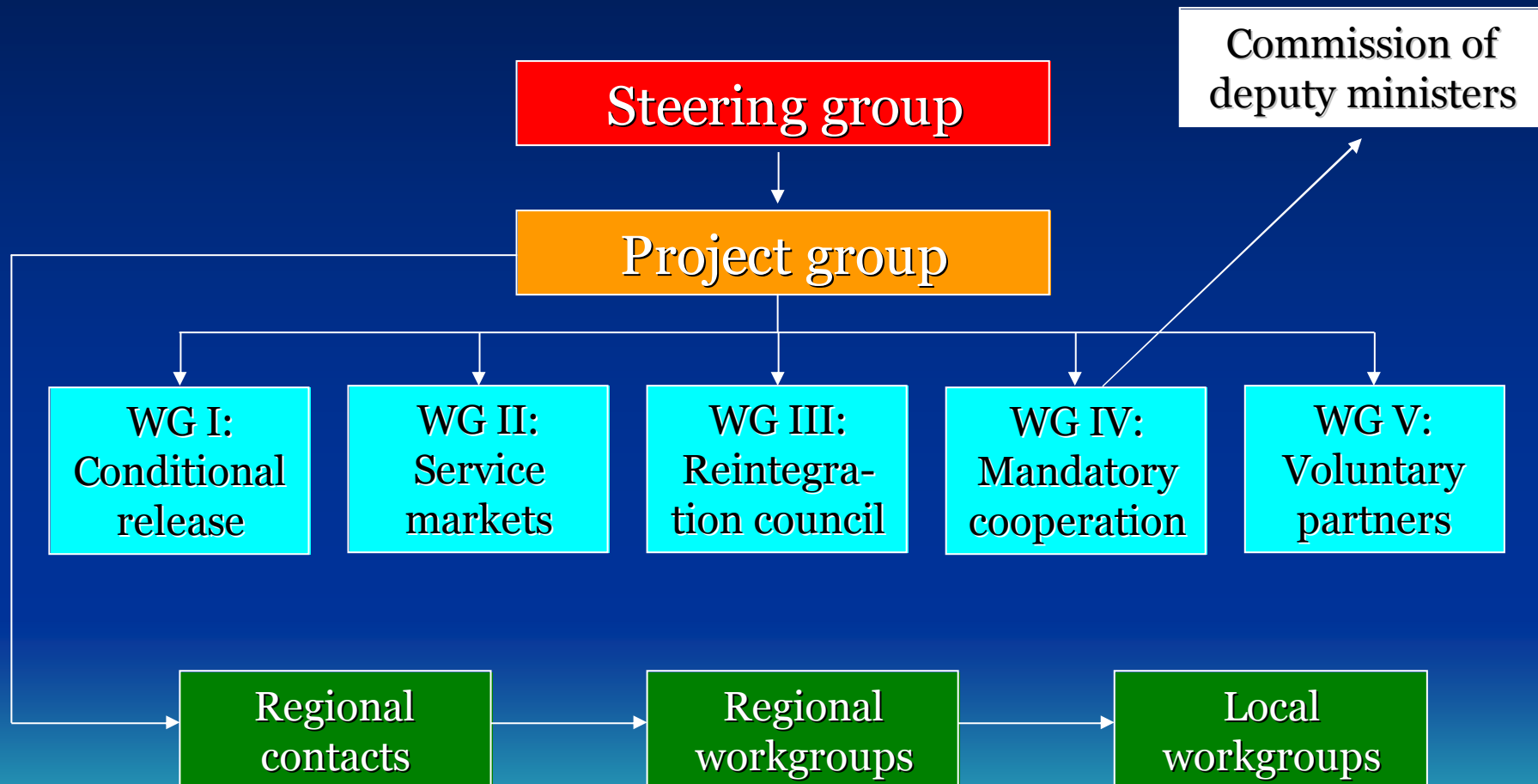


From philosophy to practice

- Changing the mind-set
- Changing working methods
 - within the correctional services
 - in partner agencies
- Organizational development
- Leadership commitment



Project structure



Correctional Services as facilitator

«Cleaning our own room»

- Premises
- Equipment/telephones
- Data/IT
- Infrastructure
- Internal/external information
- Rules/interpretation



Key Figure

The Reintegration Coordinator
25 assigned today

- Coordinate reintegration work
- Establish agreements
- Inform
- Lead service markets
- Placed in central prisons
- Include other staff



Service market

One spot with various and at given times readily available services/offers like

- Education, healthcare, employment, social benefits
- Voluntary organizations
- Managed by the the reintegration coordinator
- Mapping autumn 2011



Predictability in release

- Correctional services
- Other departments
- Offenders

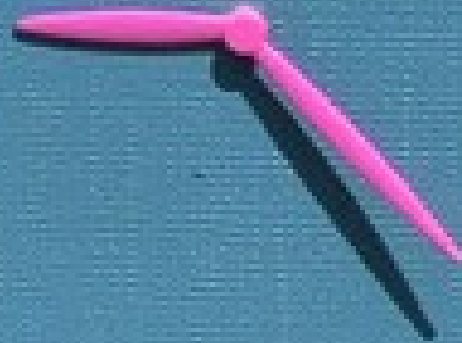
One first result:
today, 90 % of offenders
have a place to live on
release



Timeframe

Final implementation in daily operations:

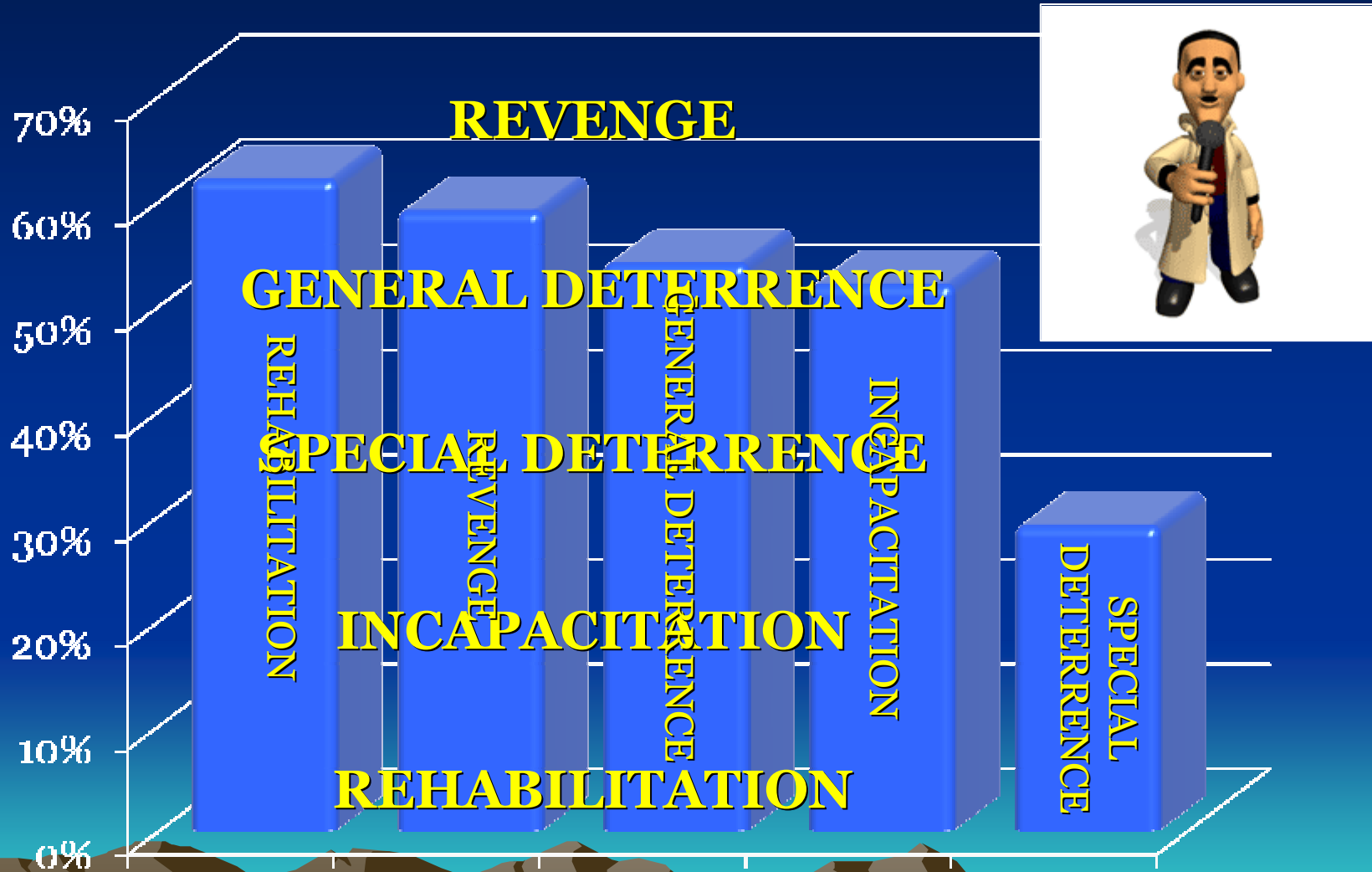
30.06.2012



We are optimistic!



The general public on penal goals



Thank you for your attention!



gerhard.ploeg@jd.dep.no

tel. +47 22 24 55 73

www.kriminalomsorgen.no

www.cepprobation.org

Twitter: @gerhardploeg